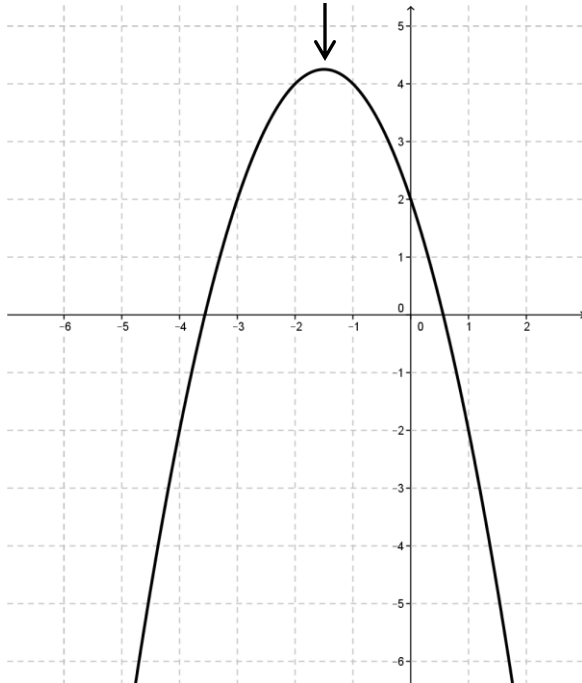
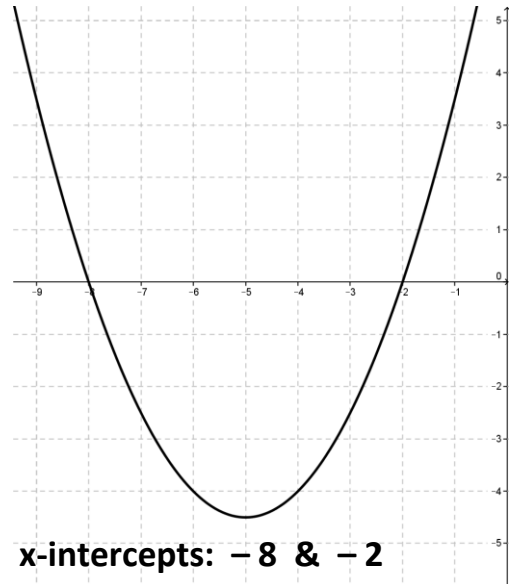


Chapter 9 Review (#11-29) Even Answers

12. Vertex is $(-1.5, 4.25)$



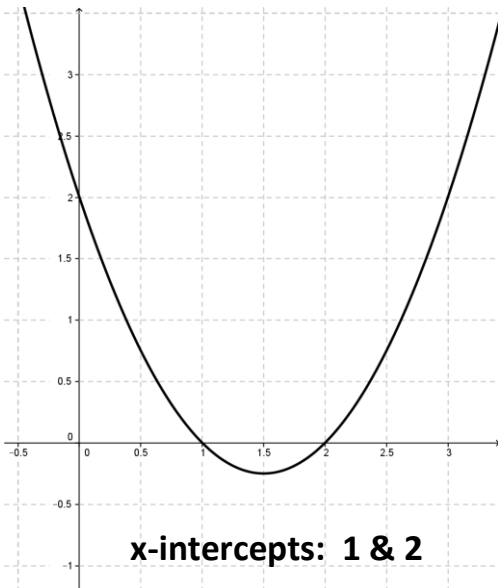
16.



x-intercepts: -8 & -2

Solutions: $x = -8, x = -2$

14.



x-intercepts: 1 & 2

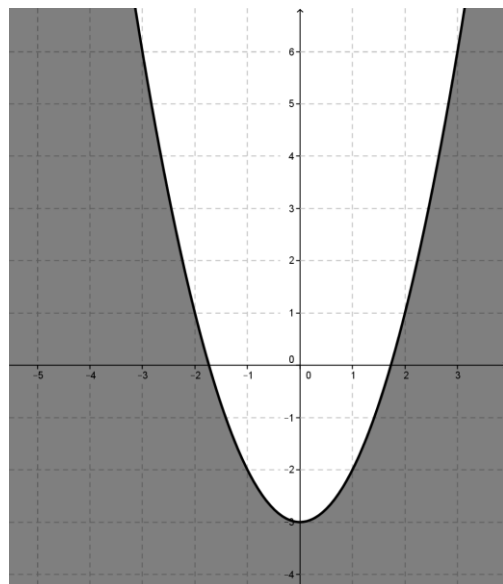
Solutions: $x = 1, x = 2$

18. $x = \frac{1}{3}, x = 1$

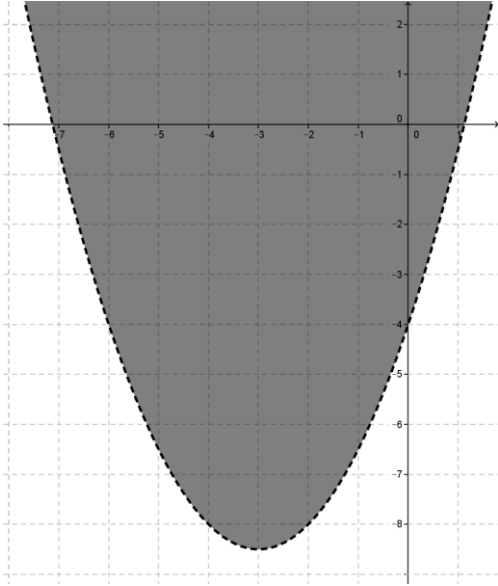
20. $x = \frac{1}{2}, x = \frac{3}{5}$

22. Two real solutions

24.



26.



28. Linear

